

FIRE DEPT

BEACON BOX™

MAPS & INFO

by FlameMapper
patents pending



georeferenced document



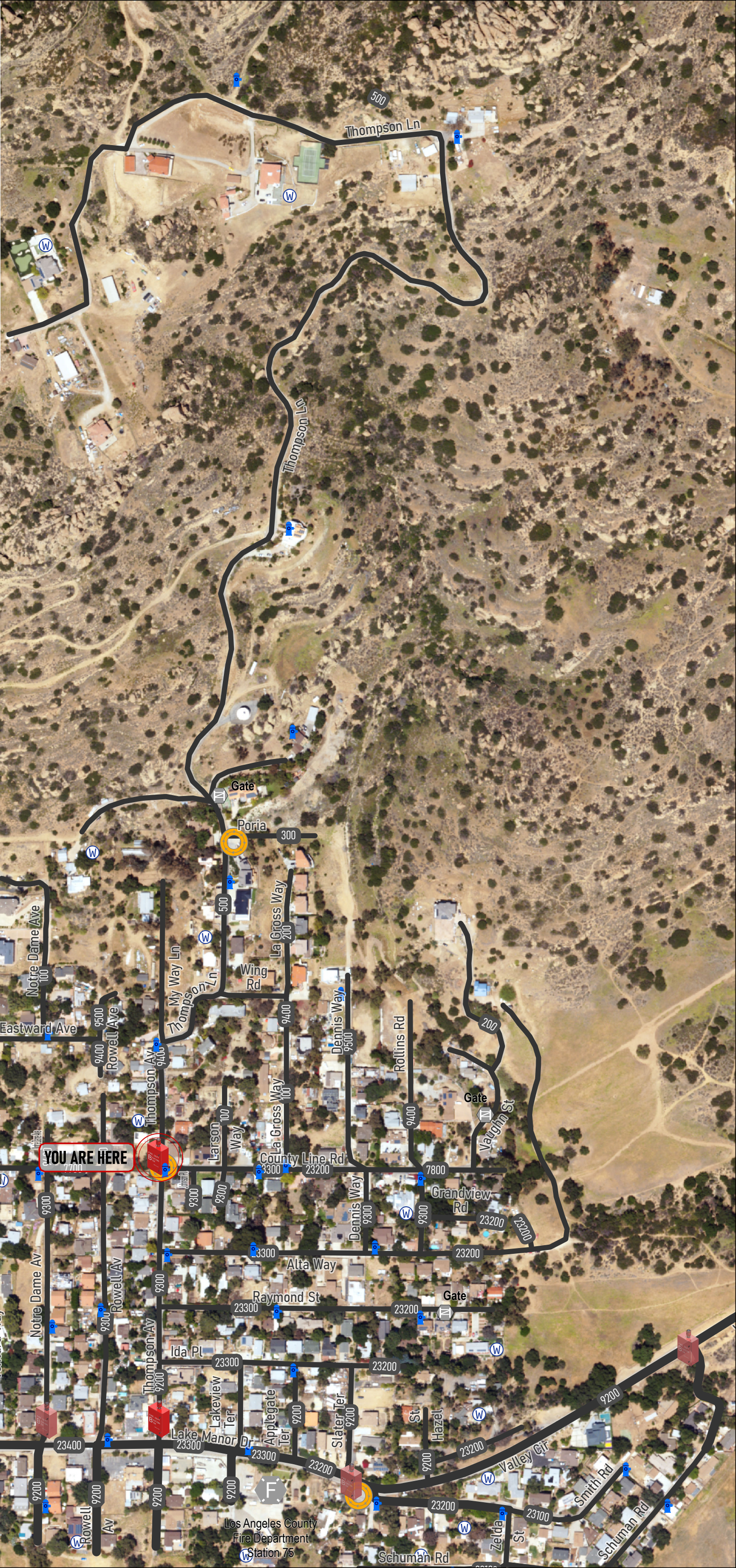
Color Blind Safe



Thompson (Upper)



0 125 250 500 Feet



YOU ARE HERE

Infrastructure

- 201 Structures
- 1 Turnarounds
- 18 Hydrants
- 0 Draft Hydrants
- 7 Pool Locations
- 2 Beacon Box

Totals are tabulated for designated area

© 2025 all rights reserved

Los Angeles County
Fire Department
Station 75